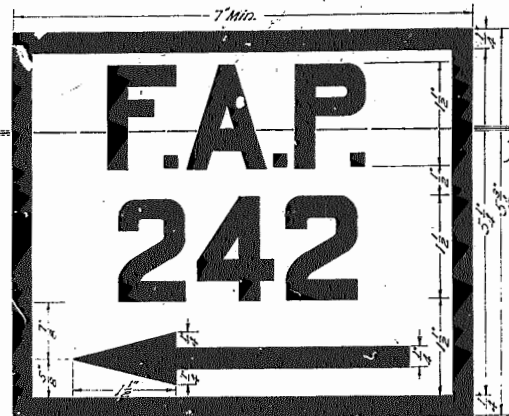
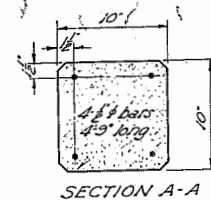
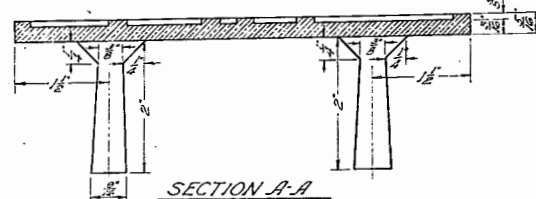


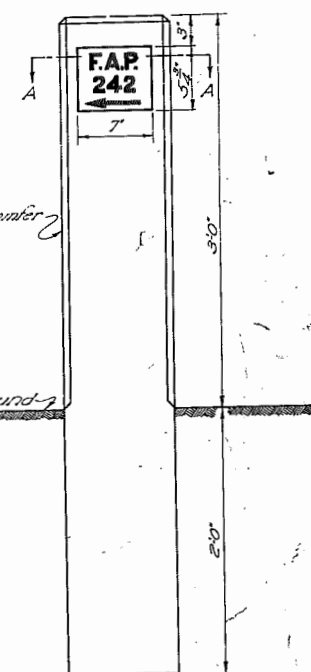
FED. ROAD DIST. NO.	STATE	PROJECT NO.	FISCAL YEAR	SHEET NO.	TOTAL SHEETS
6	ARK.				
STATE JOB NO.					



DETAIL OF MARKER PLATE TYPE AL-1 FOR FEDERAL AID PROJECTS - PRIMARY
Type AL-1 plate to conform in every respect to type AL-1 except that directional arrow shall be reversed.
For Federal Aid Secondary Projects, change letters F.A.P. to F.S.P.



SECTION A-A



NOTE:
Concrete to be Class J (1:2:4 Mix)
Numerals shown are to be the number of the project on which the marker is placed.

QUANTITIES PER MARKER	
Class J Concrete	Reinforcing Steel
0.13 Cu. Yds.	13 Lbs.



DETAIL OF MARKER PLATE TYPE AL-2 FOR FOREST HIGHWAY PROJECTS
Type AL-2 plate to conform in every respect to type AL-2 except that directional arrow shall be reversed.
Note: Dimensions to be same as for Federal Aid Marker Plates.

INSTRUCTIONS FOR PLACING MARKERS ON FEDERAL AID OR FOREST HIGHWAY PROJECTS
One marker shall be placed at each end of each Federal Aid or Forest Highway Project or section thereof, except bridge projects without graded approaches. Markers will be placed on the right hand side of the road with respect to the direction of travel and with the arrow on the marker plate indicating in which direction the project or section lies. Where two projects adjoin, the marker plates for both may be placed on the same post. For projects ending with an expansion section, the marker shall be placed between the top of the back slope and the R/W line. For projects ending with an embankment section, the marker shall be placed between the toe of the embankment slope and the R/W line. On municipal projects, place marker plate in the face of curb, when and where specified on the plans. Where a bridge or several bridges, without graded approaches, form a project or section, one marker plate shall be placed on either end of each bridge as follows: In the end rail post on bridges having concrete railing. In the face of the abutment near the steel on bridges not having concrete railing. Where the continuity of a project or section is broken thru the introduction of an exception, other than a bridge without graded approaches, a marker shall be placed at each point where the project or section is stopped and where resumed.

FEDERAL AID AND FOREST HIGHWAY PROJECT MARKERS



Stamp the design loading here with 3 steel letters and numerals. Example: H-10
Stamp the bridge number here with 3 steel numerals. Example: 242
TYPE C BRIDGE NAME PLATE STYLE 1 - FULL SIZE

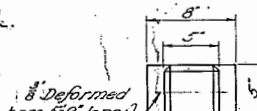


Stamp the design loading here with 3 steel letters and numerals. Example: H-10
Stamp the bridge number here with 3 steel numerals. Example: 242
TYPE C BRIDGE NAME PLATE STYLE 2 - FULL SIZE

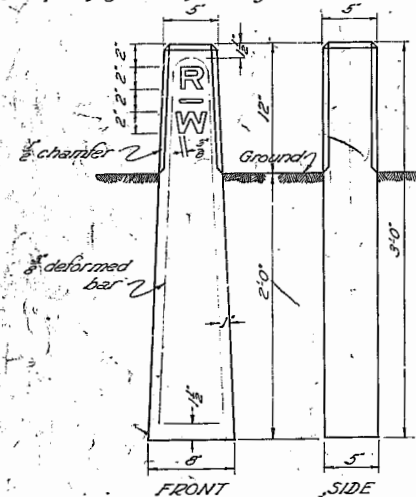
SPECIFICATIONS FOR NAME PLATES

Plates to be either Bronze or Aluminum.
Body 1/8 inch thick. Two tapering cone lugs 3/8 to 1/2 inch long.
BRONZE: U.S. Government Specifications for Statuary Bronze.
ALUMINUM: A.S.T.M. Specifications, Serial designation B26-47T.
The border and all lettering to be raised 1/8 inch above face of plate. Top surface of raised border and lettering to be polished.
All lettering to be plain Gothic, square cut and not tapered.
The number of plates required, type and location are to be as shown on Plans.
Name of Stream to be varied to suit each bridge.
Shop drawing of Bridge Name Plates shall be submitted for approval before casting is begun.

QUANTITIES PER MARKER	
Class J Reinf. Concrete	Steel
0.025 Cu. Yds.	2.2 Lbs.



Letters to be indented to a depth of 1/8 inch on one face only.



NOTE: Markers shall be placed at 1000 or 1320 foot intervals along the Right of Way line where no changes in width or direction occur, at such points as changes in width occur and at the R.C. and P.C. of all curves, as shown on the plans or as directed by the Engineer. Posts to be set so letters face roadway.
Concrete to be Class J (1:2:4 Mix).

RIGHT OF WAY MARKERS

Do not scale

FEDERAL AID AND FOREST HIGHWAY PROJECT MARKERS

RIGHT OF WAY MARKERS

BRIDGE NAME PLATES

ROUTE SEC.
ARKANSAS STATE HIGHWAY COMMISSION
LITTLE ROCK, ARK.
Drawn By: J. L. J. Date: 10-27-57
Traced By: J. L. J. Date: 10-27-57
Checked By: J. L. J. Date: 10-27-57
BRIDGE NO. DRAWING NO. 2589